



VILNIUS TECH

“Faux Real Studio”

Virtual production studio in Lithuania

VILNIUS TECH

“Faux Real Studio” –

virtual production studio in Vilnius,
featuring a modular LED volume & camera
tracking system for applications involving
virtual production and on-camera
scenarios.



SPECIFICATIONS - LED SCREEN

LED Dimensions	7 x 3 m *
Resolution	3584 x 1536 pixels
Pixel Pitch	1.95 mm
Brightness	1800 nits
Refresh rate	9860 Hz
Viewing angle	175°



* Dimensions can be extended depending on technical needs.

SPECIFICATIONS – TRACKING SYSTEM



CAMERA TRACKING SYSTEM

Stype RedSpy

A Camera Tracking system seamlessly blends computer-generated elements with live-action footage to achieve precise alignment and authentic interaction within captivating virtual environments.

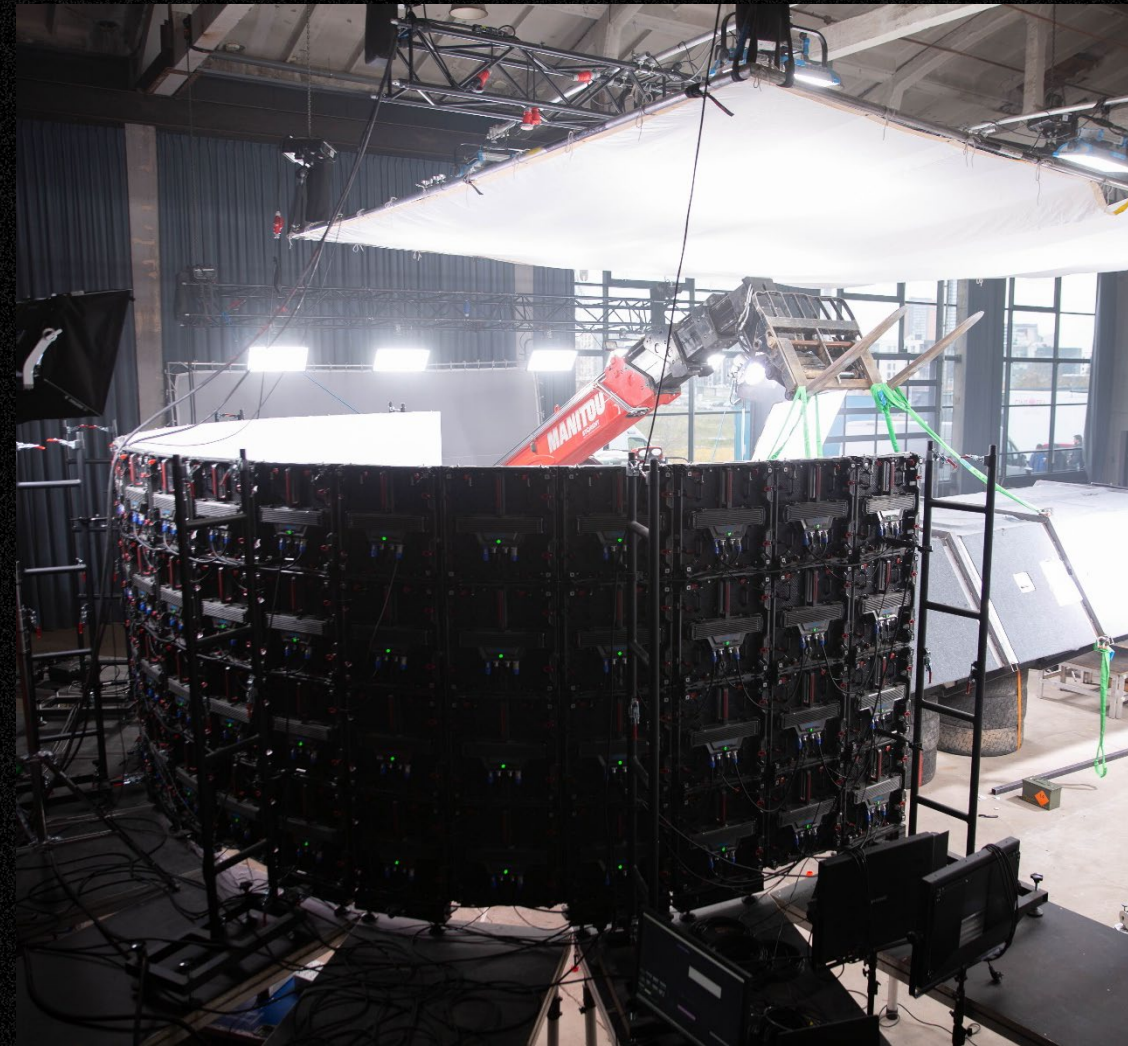
WIRELESS LENS CONTROL

Teradek RT FIZ

SPECIFICATIONS - LIGHTS

1 unit	Aputure LS 1200d Pro
2 units	Aputure LS 600d Pro
1 unit	Aputure LS 600c PRO
4 units	Aputure Nova P600c

Our fully-integrated interactive lighting system controls and programs the lighting in conjunction with the LED display to create a photorealistic and fully calibrated set.



SPECIFICATIONS - RENDER



Software	Unreal Engine 5.3
Setup	1 render node & 1 control node
GPU's	NVIDIA RTX A6000 & 4090
Processors	AMD Threadripper Pro 3955WX

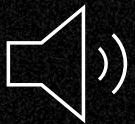
STUDIO SPACE - HANGAR



Drive-in studio
4,1 x 3,8 m. gates



Large windows
& black-out curtains



Good acoustics



Screen is movable
Upon request

Studio Dimensions	D 18 m. x W 35 m. x H 7-9 m
Area	650 sq. m
Power options	4 x 16 A (Three-phase)
	3 x 32 A (Three-phase)
	12 X 220 V
Floor	Concrete, light grey

STUDIO SPACE - HANGAR



STUDIO SPACE - HANGAR



STUDIO SPACE - HANGAR



[Virtual tour](#)





3 entrances



Office space

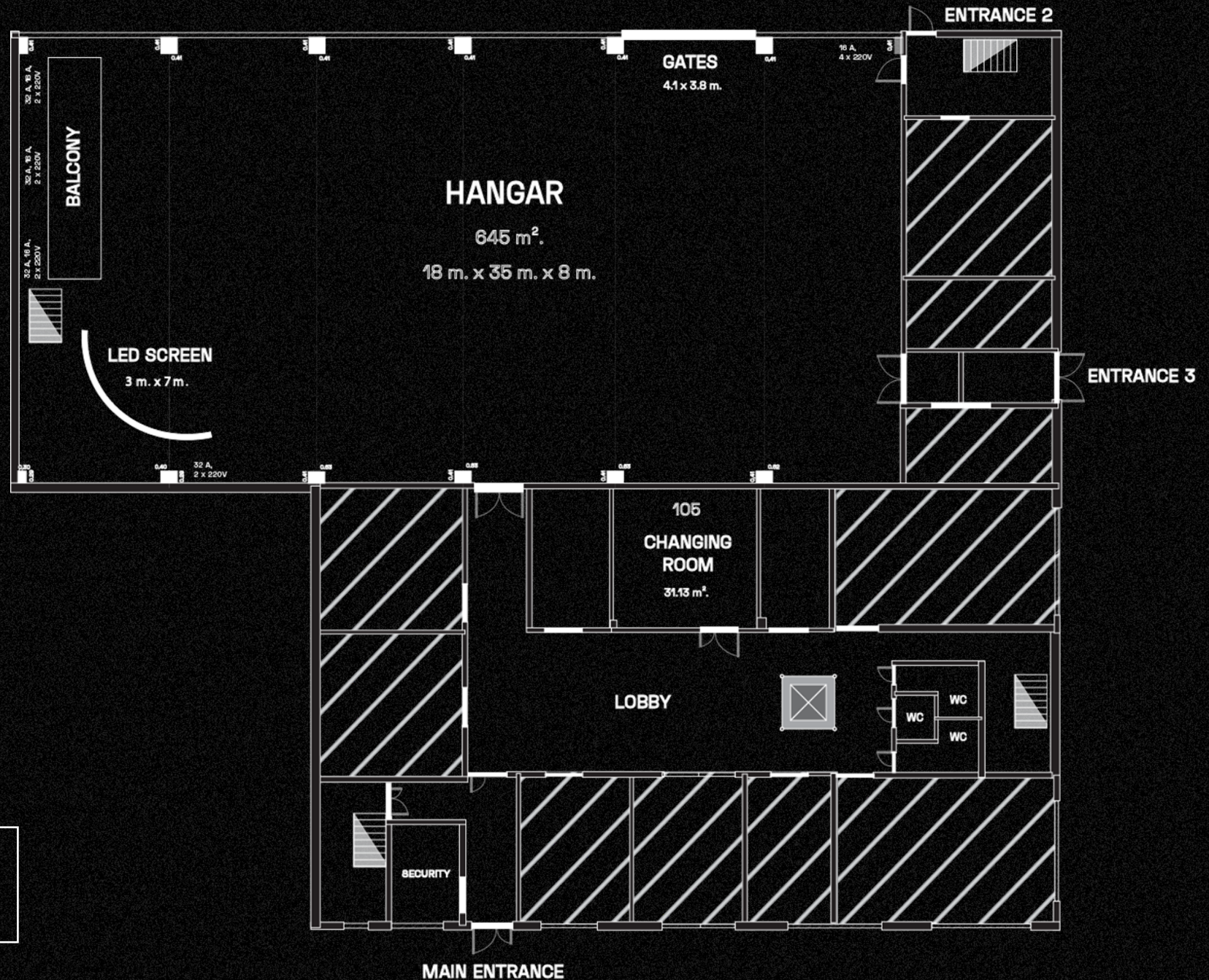


3 WC



Elevator

FIRST FLOOR





Direct stairwell
to hangar



Two office
spaces

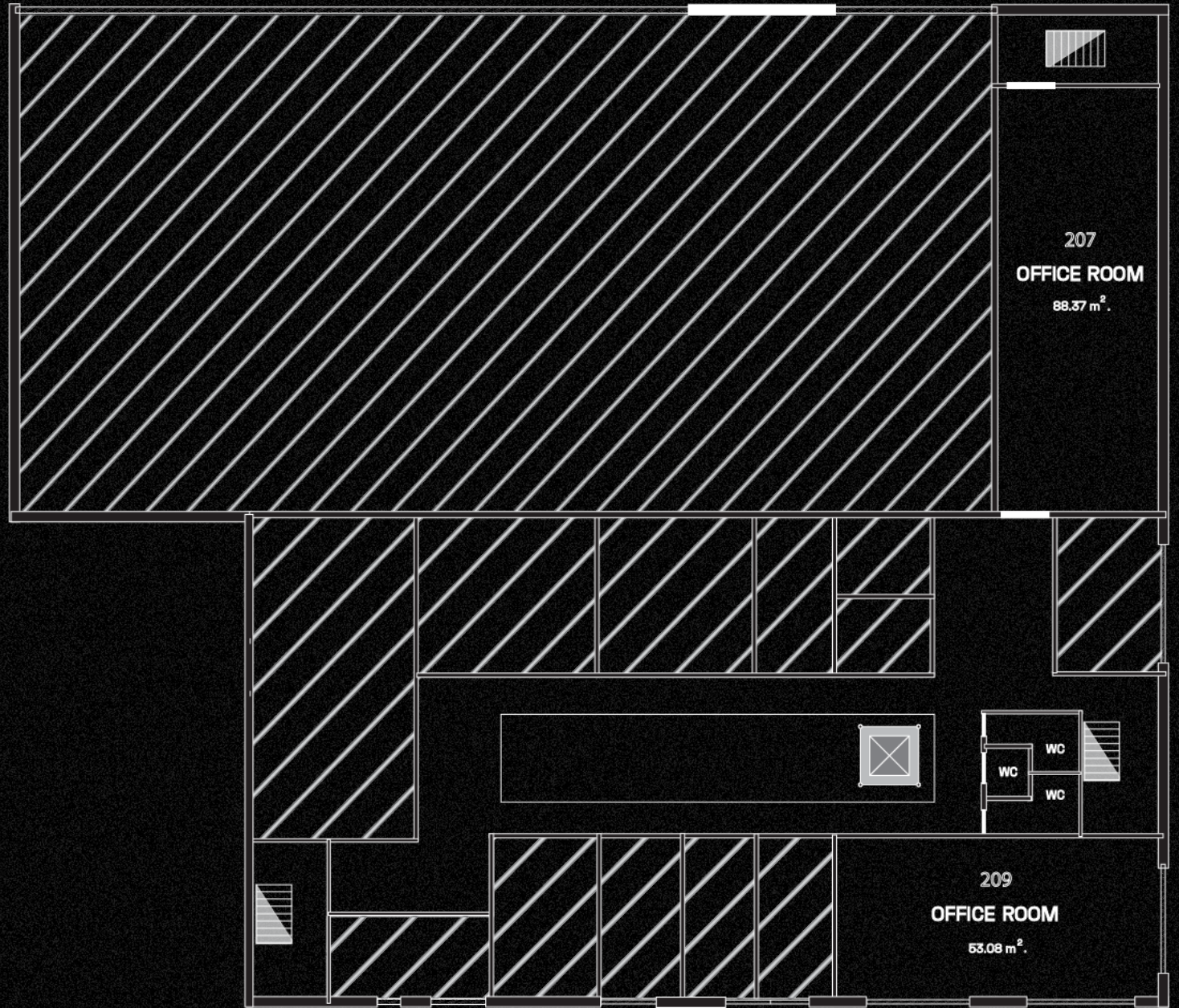


3 WC



Elevator

SECOND FLOOR



SERVICES – PREPRODUCTION

- Art Direction,
- Art Department,
- Prop production facilities (wood, metal, paintwork, 3D printing),
- Preproduction & Technical Consultancy,
- Virtual Art Department,
- Capturing real locations through scanning, photogrammetry, and plates,
- Photorealistic real-time environments,
- VFX Supervision,
- Blocking and Scene Layout, (based on accurate scanning data),
- Virtual and remote location scouting (including VR),
- Virtual cinematography,
- Virtual characters,
- Tech Viz,
- Pre Viz.

SERVICES – PRODUCTION

- DVP/Virtual Production Supervisor,
- VFX Supervision.

SERVICES – POSTPRODUCTION

- Full VFX and Postproduction Pipeline,
- Rotoscoping and Floor replacement,
- Set Extension,
- Post-Renders for Compositing.
- Hi-res Renderings for Print.
- Creative Services.

SERVICES – VIRTUAL PRODUCTION

- Technical Supervision,
- Production Planning,
- Volume Operations,
- Scene Import and Optimization,
- Camera Tracking and Data Acquisition,
- Color Management,
- AR + Realtime VFX Previz,
- Virtual Props,
- Custom Studio Design and LED Setups,
- Real-time Rendering & Visualization,
- Virtual Greenscreen,
- Virtual and DMX Lighting.

SERVICES – PROPS-PRODUCTION

Various props can be manufactured at our premises. In addition to the virtual production studio, our premises are equipped with metal, wood, electronics, and 3D printing workshops.

Our Prototyping Lab specialists are ready to utilize the latest rapid prototyping technologies and create the props you could use – from small specific electronic devices to larger set props.

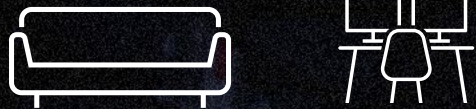
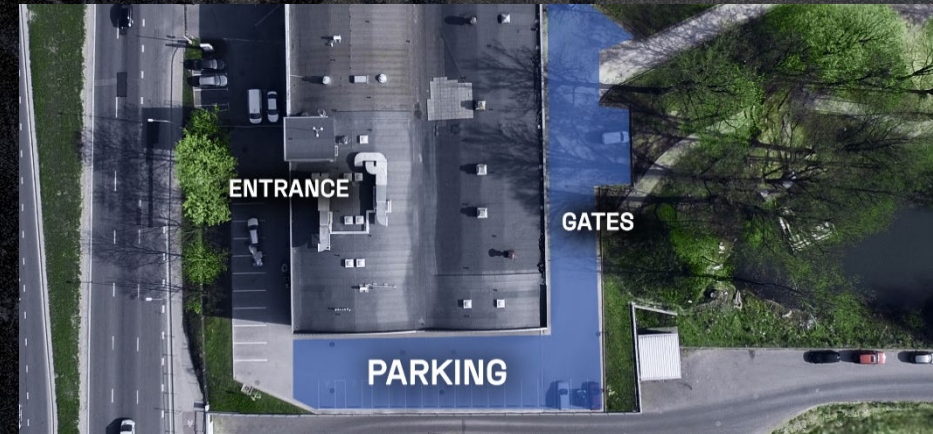


STUDIO SPACE – LOCATION & CITY



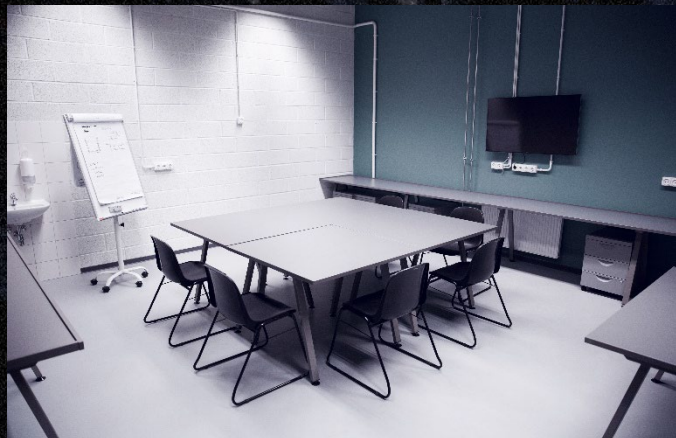
On – site parking

Space for ~ 30 cars

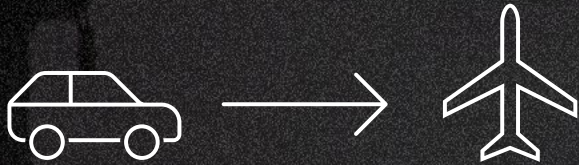


Temporary offices

3 rooms (30-60 sq. m)



STUDIO SPACE – LOCATION & CITY



From Vilnius airport

~ 10 km.



From main hotels

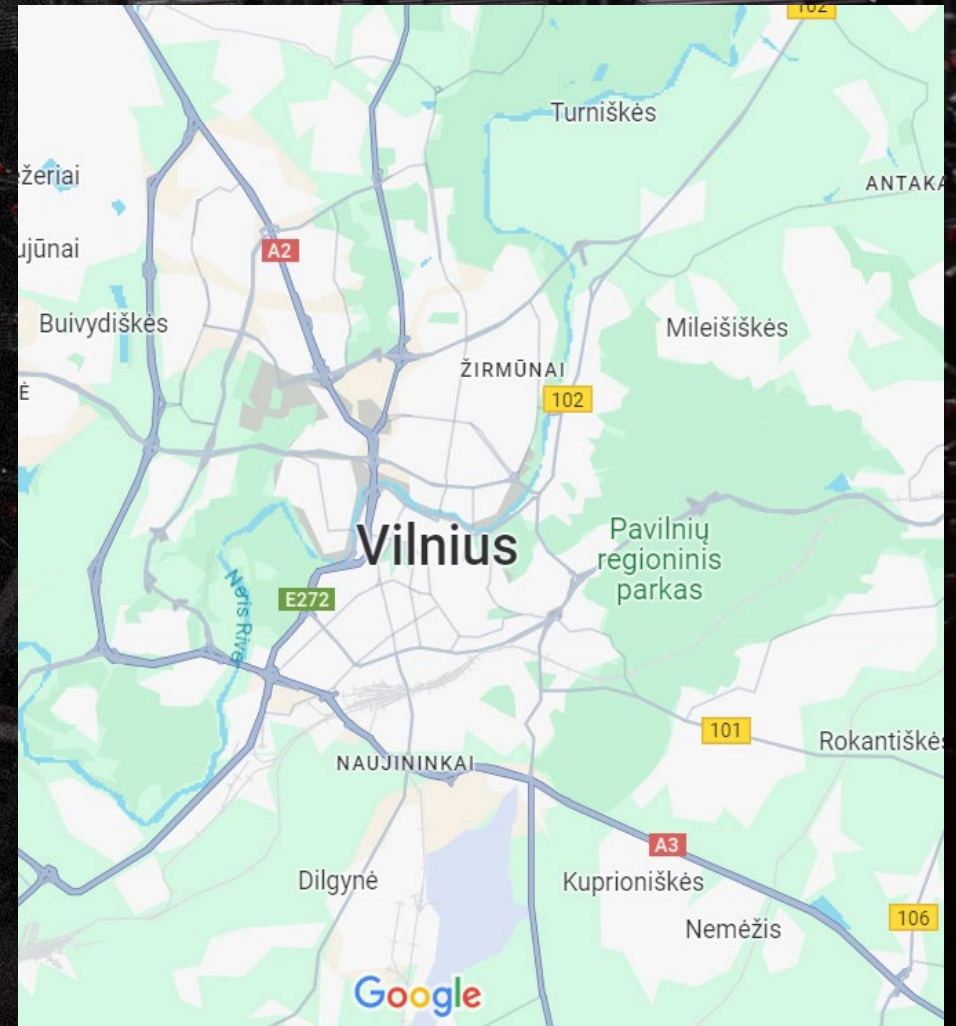
~ 3 km.



From Vilnius Old Town

~ 4 km.

[Google maps](#)





VILNIUS
TECH

Faux Real studio

Virtual first.



fauxreal@vilniustech.it



fauxreal.it